



**deepplanet**

AI for Sustainable  
Precision Viticulture  
**VineSignal**

Suisun Valley Growers  
Feb 6, 2024

David Carter  
[david@deepplanet.ai](mailto:david@deepplanet.ai)  
**713-724-2207**



# Intro to Deep Planet

Harness AI / Machine Learning for the Benefit of the Planet

Help Growers and Sustainability teams, Winemakers and Operations teams, and Industry association personnel to improve vineyard management, efficiency and sustainability at scale

**Our VineSignal SaaS product helps to:**

- Improve soil health and sustainability – nutrients and carbon
- Improve harvest logistics and efficiency
- Detect diseases and risks to vine health
- Monitor soil moisture and reduce water input



# Industry Challenges

If it was possible, which one or two of these would you address tomorrow?



Harvest logistics and inefficiencies



Soil health and sustainability



Input costs (fertilizer, compost, pesticides)

Water management and irrigation



Vineyard health and disease pressure

Labour costs and shortages



# Deep Planet Team and Locations

We are talented and passionate machine learning researchers, plant scientists



● **Dave Carter**  
CEO, Head of  
USA



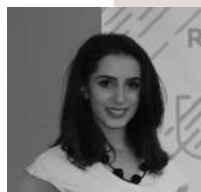
○ **Matthew Homyak**  
California  
US BDE



● **Christopher Pang**  
Commercial  
Directeur



○ **Alec Bannister**  
Customer  
Success



**Lucy Manukyan**  
Planet Scientist



- Research Hub (UK)
- Country Location (France, USA, Australia)
- Future Location (Italy, Spain, South America)

# VineSignal Product



## Health

- In block vine health/stress
- Five day and monthly change
- Prediction of health
- All weather radar
- Anomaly Detection

## Microclimate

- Visualization of microclimate
- Canopy wetness
- Temperature, wind

## Carbon

- Stratification and Sampling
- Carbon baselining
- Soil Organic Carbon
- Markets

## Digital Twin

- 3D mapping of vineyard
- Biodiversity
- Sub surface model
- Phenology data

## Harvest

- Predict harvest date
- Optimize harvest resources
- Maturity prediction

## Pest and Disease

- Early warning 9 diseases
- Disease detection
- Spread monitoring

## Yield

- Hands off yield prediction
- Early, mid and late season
- 90%+ accuracy
- Yield / Profitability Mapping

## Water and Nutrients

- Leak Detection
- Water prescription
- Nutrition Detection
- Nutrition Optimization

## Integrations

- APIs to all major systems, irrigation, IOT, tractor guidance, spray diaries

## Maturity and Quality

- Maturity Mapping
- Enable split picking
- Improve quality

## Phenology & Work Mgt

- Phenology data
- Job Management
- Vineyard Notes

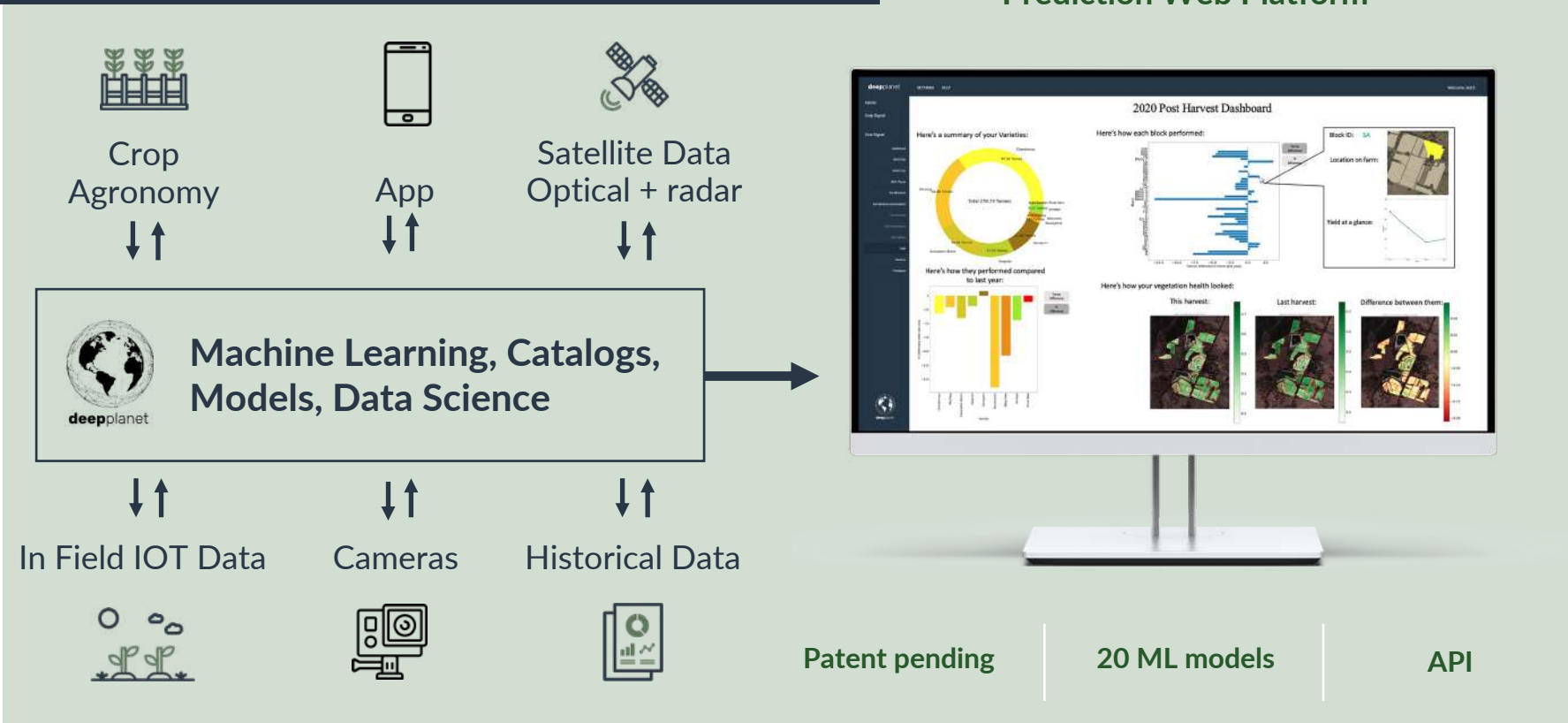
## Communities

- Share results
- Tap experts

# How it works

Proprietary Machine Learning Platform

## Prediction Web Platform



# How it works

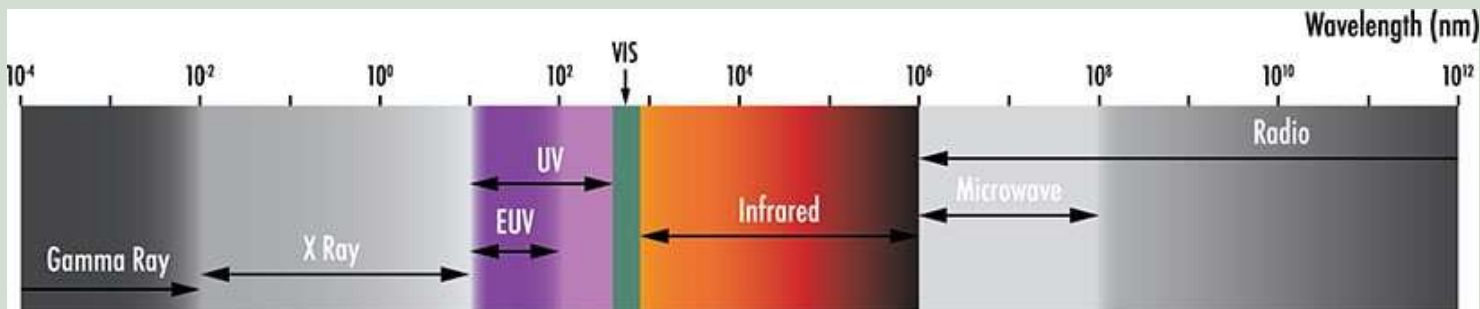
Satellite Imagery Hyper and Multi spectral



Satellite Data  
Optical + radar  
Dataset  


## Hyperspectral and Multispectral

*Only a small portion of the wavelength spectrum is visible to the human eye, and wavelength regions outside of the visible spectrum, are utilized in hyperspectral and multispectral imaging.*





# Growing and Sustainability

- Soil organic carbon
- Soil and Leaf nutrients (NPK)
- Disease detection and monitoring
- Health and Growing
- Water and Irrigation



# VineSignal Product

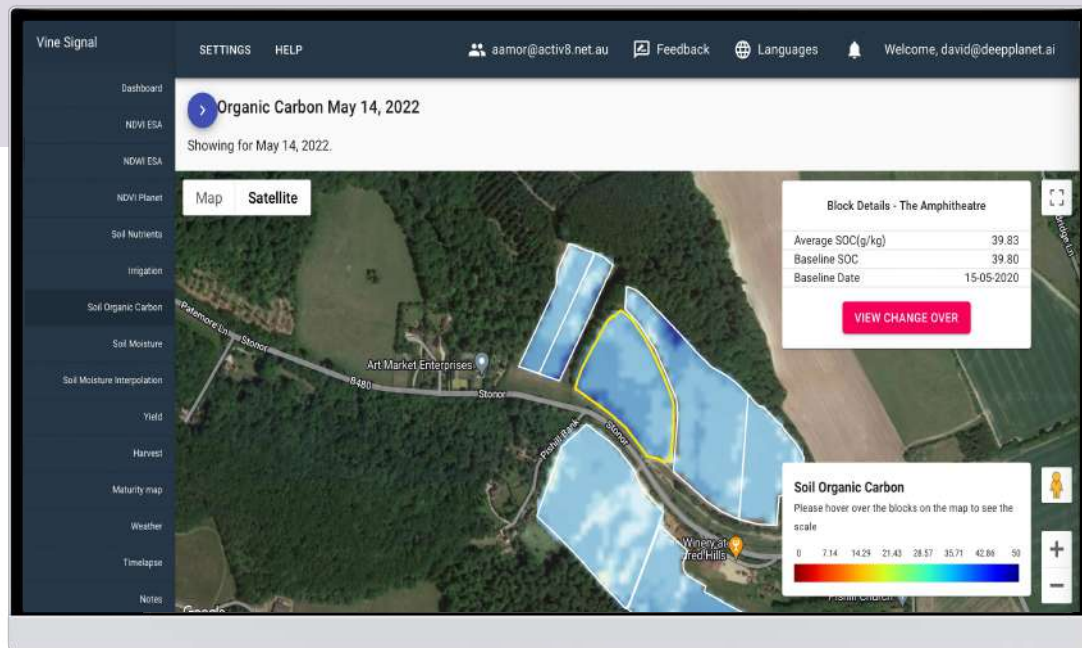
1.

## Carbon and Soil Health



# SoilSignal Product

## Carbon

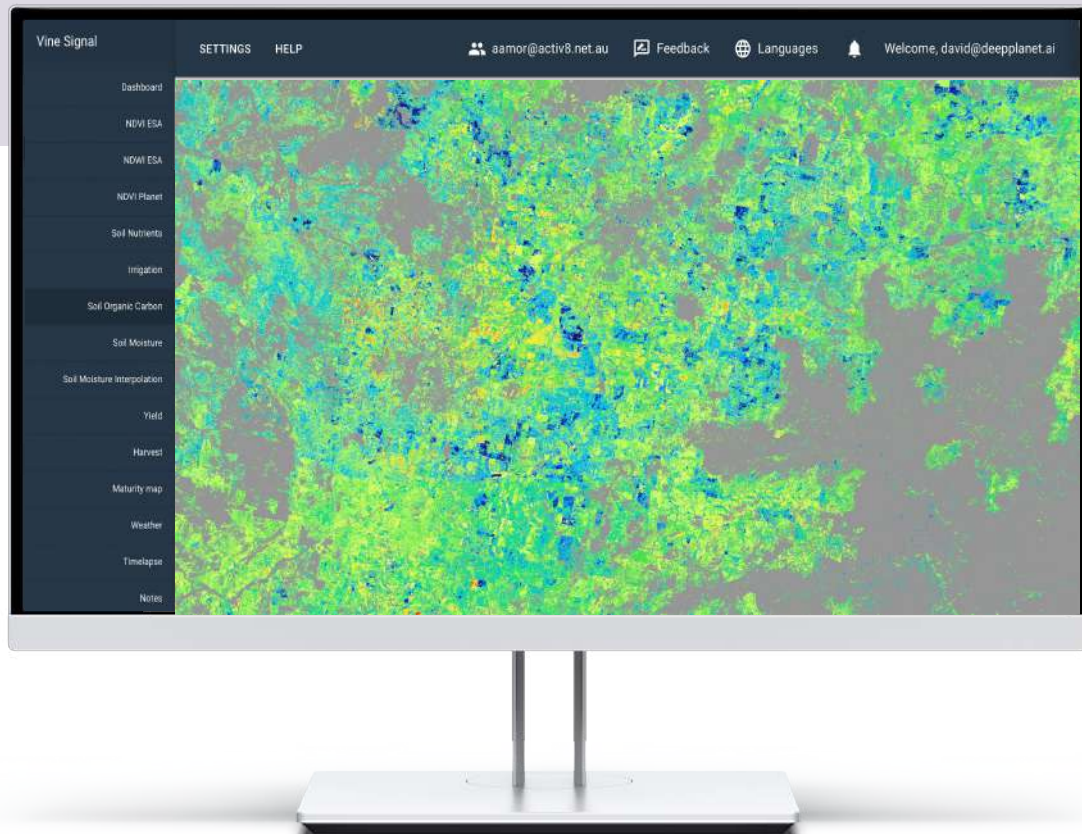


## Soil Organic Carbon

- Baseline Soil Organic Carbon
- Track improvements and degradation over time
- Improve farming outcomes and profitability

# SoilSignal Product

## Sustainable Supply Chains

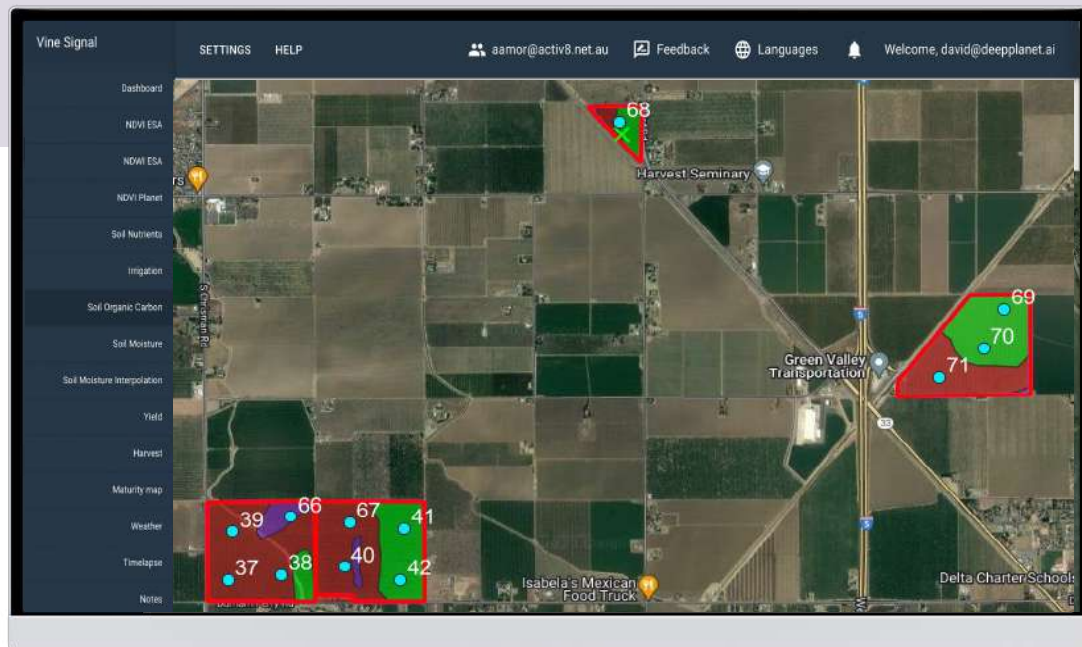


## Sustainable Supply Chains

- Identify leaders within regions
- Take Snapshot at a point in time.
- Track actions, improvements and degradation over time

# VineSignal Product

## Stratification

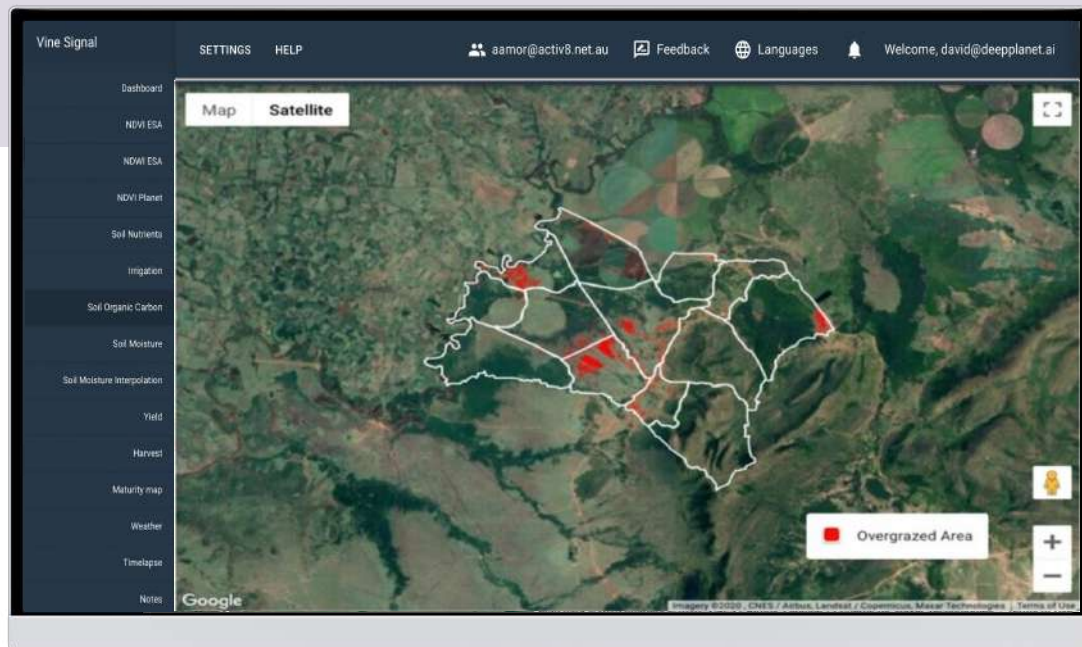


## Stratification

- Identify stratification across farms using elevation, clay content, soil bulk density, topographic wetness, soil depth
- Apply randomised sampling points.
- Prepare for soil moisture probe installation

# VineSignal Product

## Rotational Grazing



## Rotational Grazing

- Overgrazed Areas
- Biomass
- Grass Height
- Species

# VineSignal Product

## Biodiversity Measures



## Biodiversity

- Identify Species
- Tag assets or events around the property
- Shannon Index

# VineSignal Product

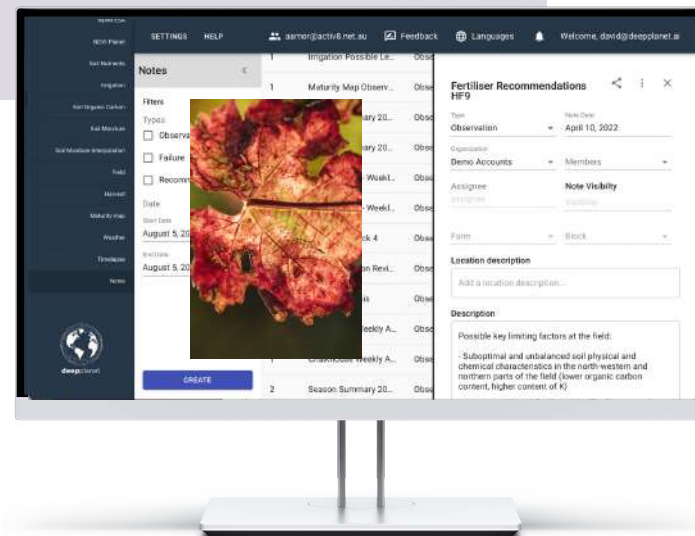
## 2.

### Soil and Leaf Nutrients



# VineSignal Product

Vine Nutrient Deficiency



Snag Photo,  
Tag location  
and Send to  
Deep Planet

Get nutrient results  
and identify nutrient  
deficiency.

Determine treatments

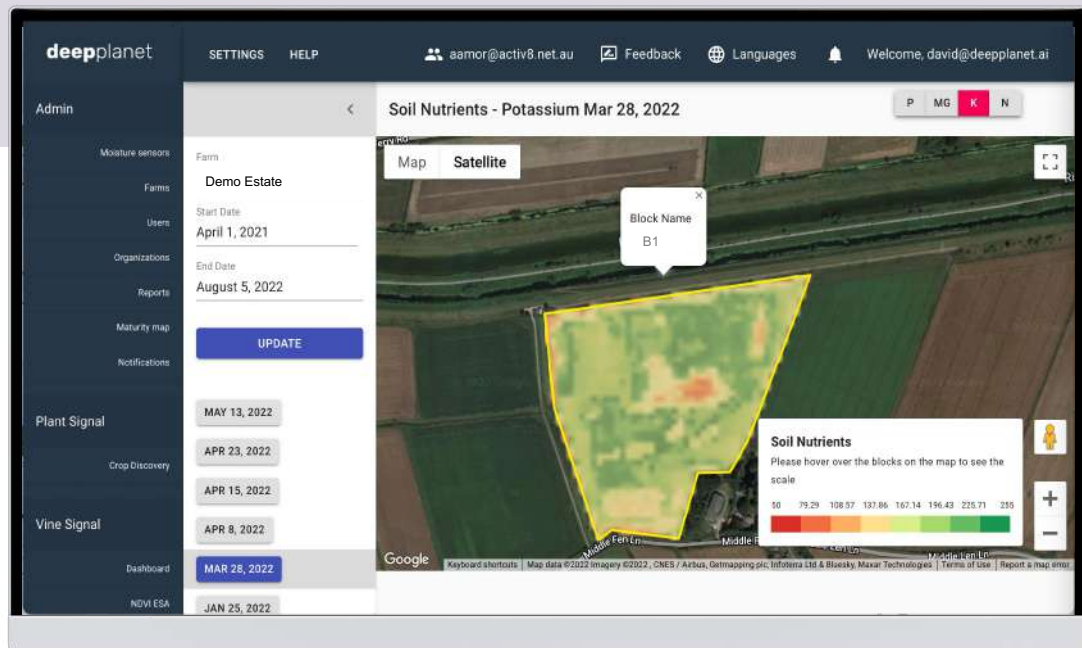


Optimise Nutrient and  
Fertilizer Applications



# SoilSignal Product

## Soil Nutrients



## Soil Nutrients

- NPK + Mg variability across block
- Inform Fertilizer applications
- Identify areas for remediation

# VineSignal Product

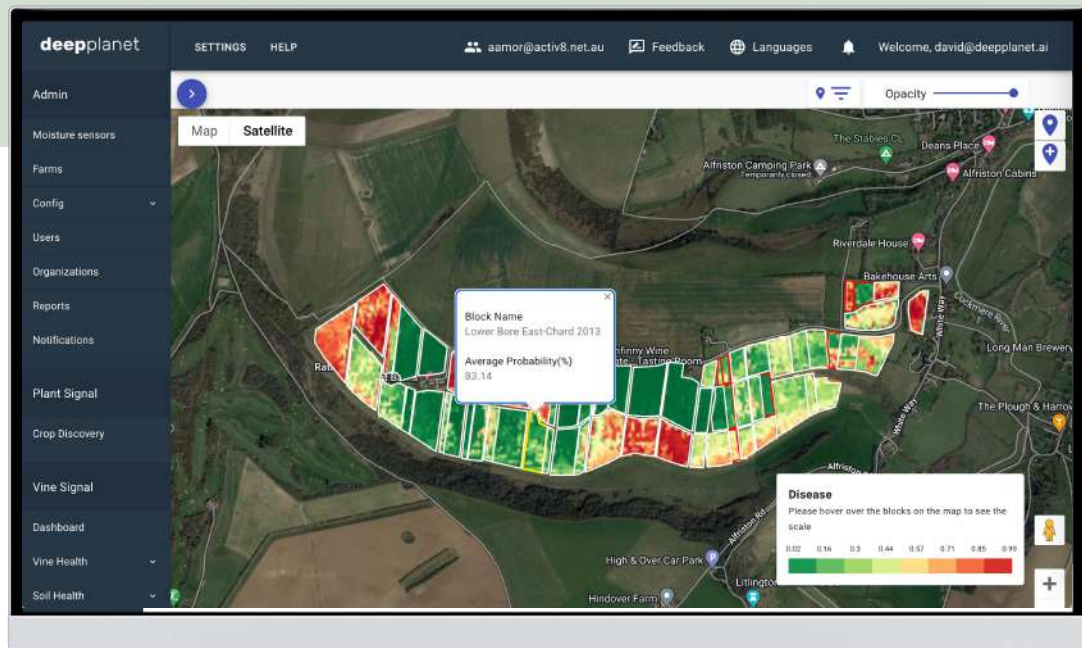
## 3.

### Pest & Disease



# VineSignal Product

## Pest and Disease



- Disease conditions early warning (Powdery and Downy Mildew, Botrytis)
- Track spread
- Identification and detection of major pest and diseases



# VineSignal Product

## Pest and Disease

- Disease conditions early warning (Powdery and Downy Mildew, Botrytis)
- Track spread
- Identification and detection of major pest and diseases:
  - Phylloxera
  - Leafroll
  - Leaf Blotch
  - Aspergillus
  - Ripe Rot
  - Downy Mildew
  - Botrytis
  - Pierce's Disease
  - Bitter Rot
  - Sooty Mould
  - Powdery Mildew
  - Eutypa Dieback
  - Grapevine Virus
  - Penicillium
  - Sour Rot



# VineSignal Product

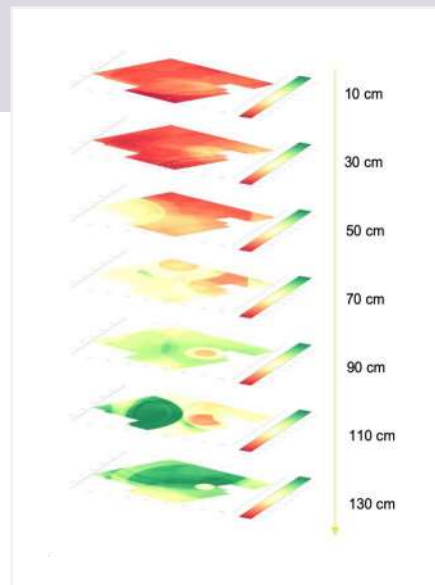
# 4.

## Irrigation



# VineSignal Product

## Irrigation



Know where  
to irrigate

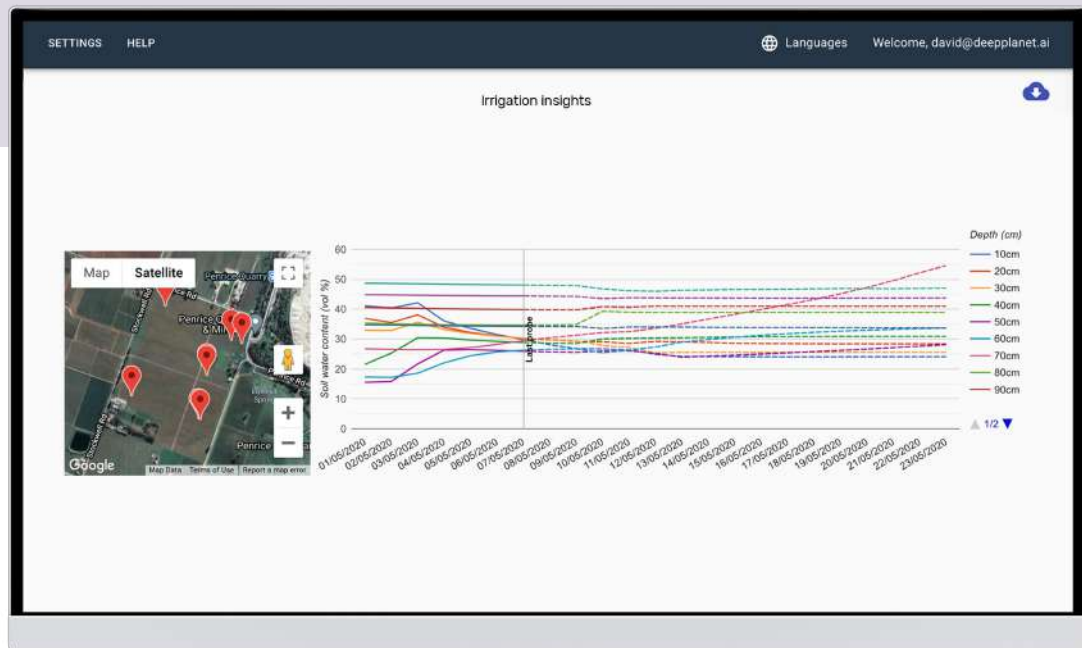
Don't blanket irrigate  
based on one point

Variable application:  
Reduce water usage,  
last longer

\$300/ha, 2% push blocks  
where needed, yield

# VineSignal Product - Demo

## Irrigation

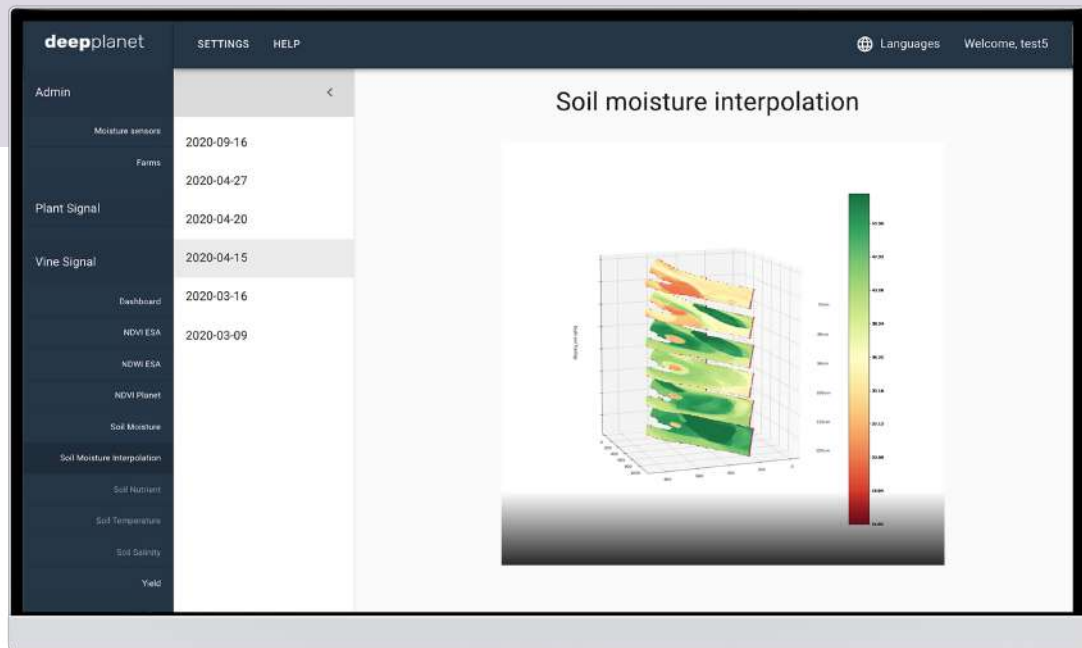


## Soil Moisture

- Sensor prediction
- 2 weeks
- 95% accuracy

# SoilSignal Product - Demo

## Irrigation



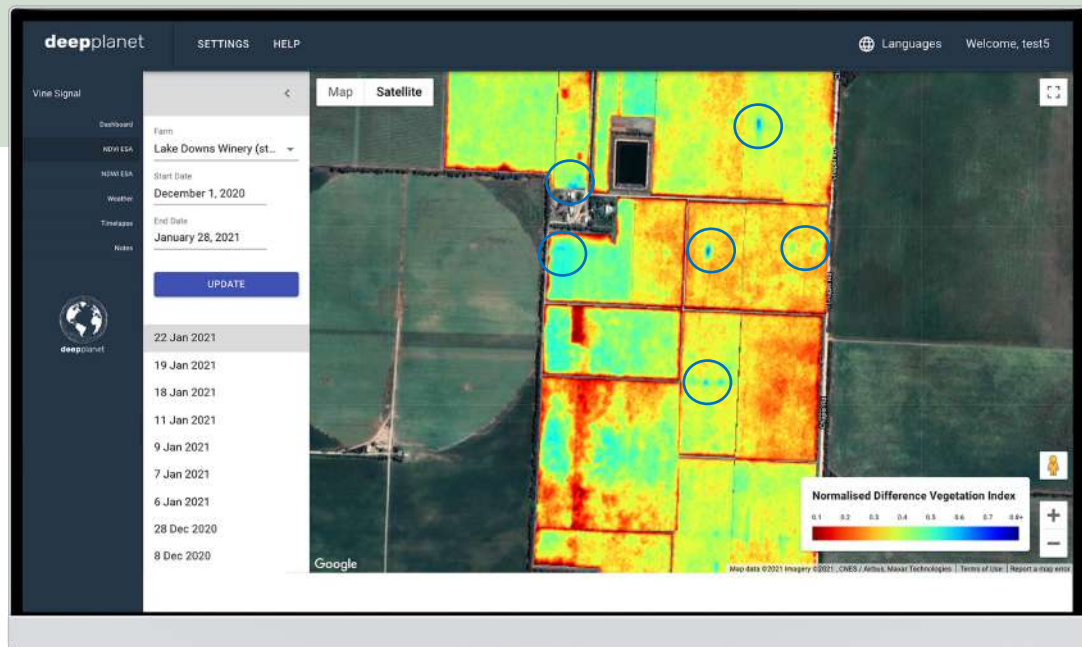
## Soil Moisture

- Soil moisture across whole site
- Targeted Irrigation prescriptions



# VineSignal Product - Demo

## Irrigation



### Irrigation leaks

- Daily imagery
- Every 3 vines per pixel



# VineSignal Product - Demo

## Evapotranspiration



## Evapotranspiration

- Hands off ET monitoring
- Evapotranspiration visualization
- Daily and cumulative ET across the season
- Use for dynamic Irrigation scheduling



A person is shown in profile on the right side of the image, holding a refractometer against a cluster of dark grapes. The background is a blurred vineyard with green leaves and brown branches. The refractometer is a handheld device with a silver body and a black handle, used for measuring the sugar content of grapes.

# Winemaking, and Harvest Logistics Efficiencies

- 
- Where to harvest?
  - When to harvest?
  - What's the productivity?

# VineSignal Product

5.

**Baume/Brix  
Heat Maps**



# VineSignal Product

Maturity and Quality



**Identify Split Picking**  
opportunities for higher quality



**Ensure consistent Quality**  
across the vineyard

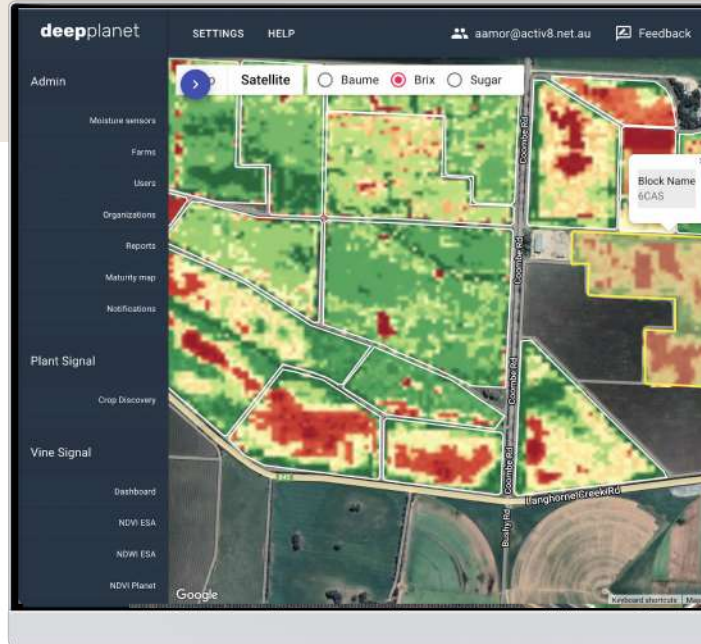


**Grape up and downgrade**  
opportunities to maximize quality  
and across wine portfolio



# VineSignal Pro

Brix / Baume Heat Maps

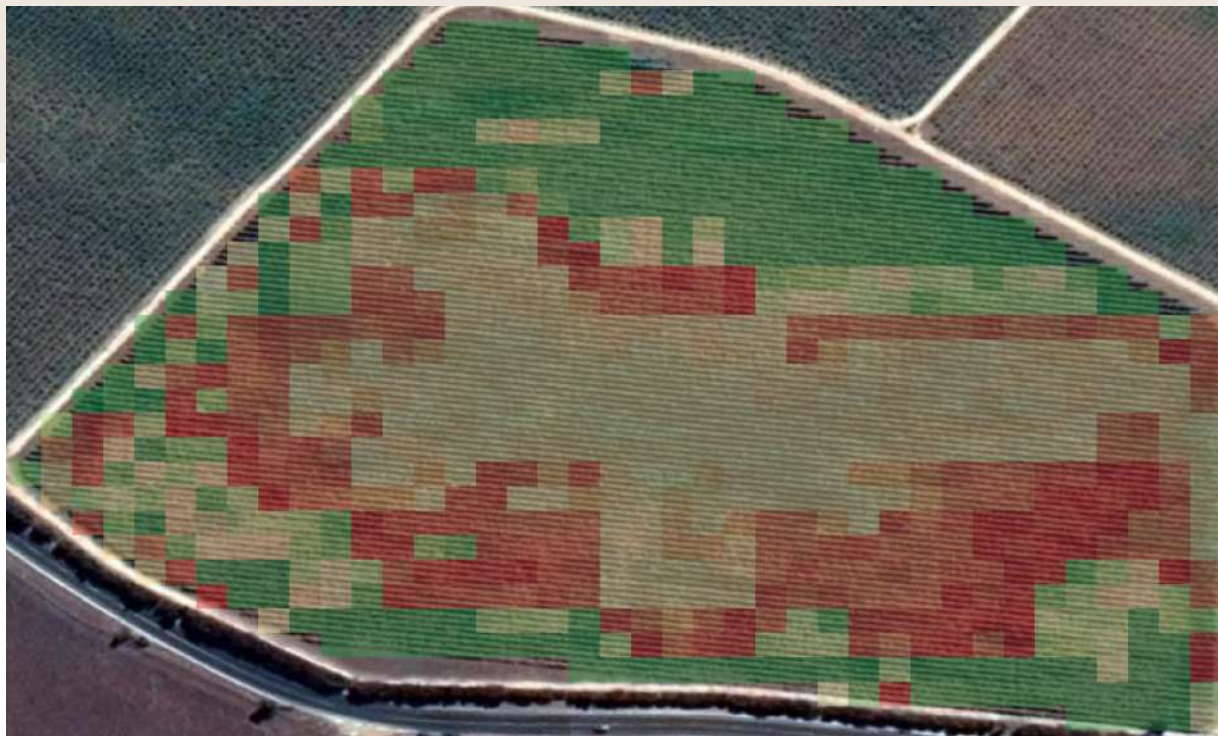


Identify areas of the vineyard for split picking opportunities  
Ensure consistent quality across the vineyard  
Target locations for sample testing  
Identify grapes for quality upgrade and downgrade opportunities.  
2022 - Reduce sampling required



# Brix / Baume Heat Maps

Brix / Baume variable blocks



## Variability

Variability in the brix / baume of the block



# Brix / Baume Heat Maps

Brix / Baume variable blocks



## Small Variability

Small variability in the brix / baume of the block, but good to know.





# Brix / Baume Heat Maps

Brix / Baume consistent blocks



**Consistent**  
Consistent brix / baume of the  
block



# Brix / Baume Heat Maps

Brix / Baume in-consistent blocks



# VineSignal Product

# 6.

## Maturity and Harvest Date



# VineSignal Product

Harvest Date



**Optimize harvest costs**  
by planning accurate  
harvest dates



**Automatic updates**  
of harvest scheduling



**Accurate coordination**  
and reporting between wineries  
and growers



# VineSignal Product

## Maturity and Harvest dates



- Maturity Curve
- Harvest date prediction.
- Maturity from Satellite imagery
- 4 readings to high accuracy



# VineSignal Product

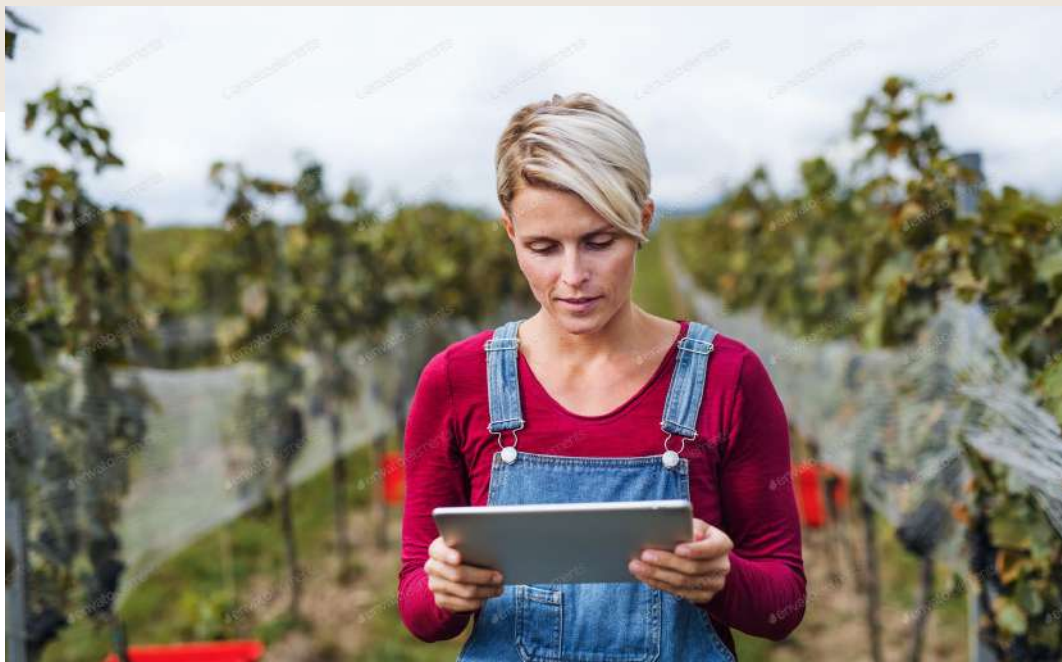
7.

**Yield  
prediction  
(Crop  
Estimates)**



# VineSignal Product

Hands off yield prediction



**Save time in sampling**  
to get more accurate results



**1-2% avoidance**  
of loss destructive sampling

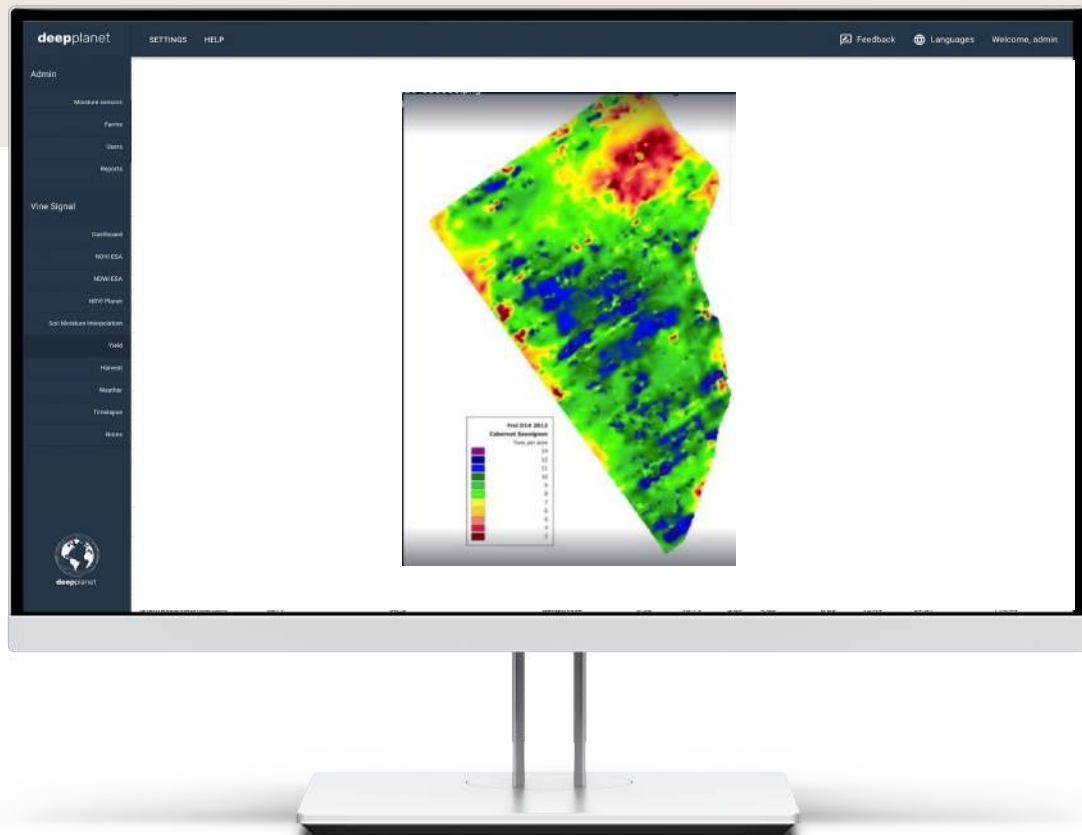


**Accurate coordination**  
and reporting to wineries  
maximizing commercial terms



# VineSignal Product

Yield Variability Maps - Beta



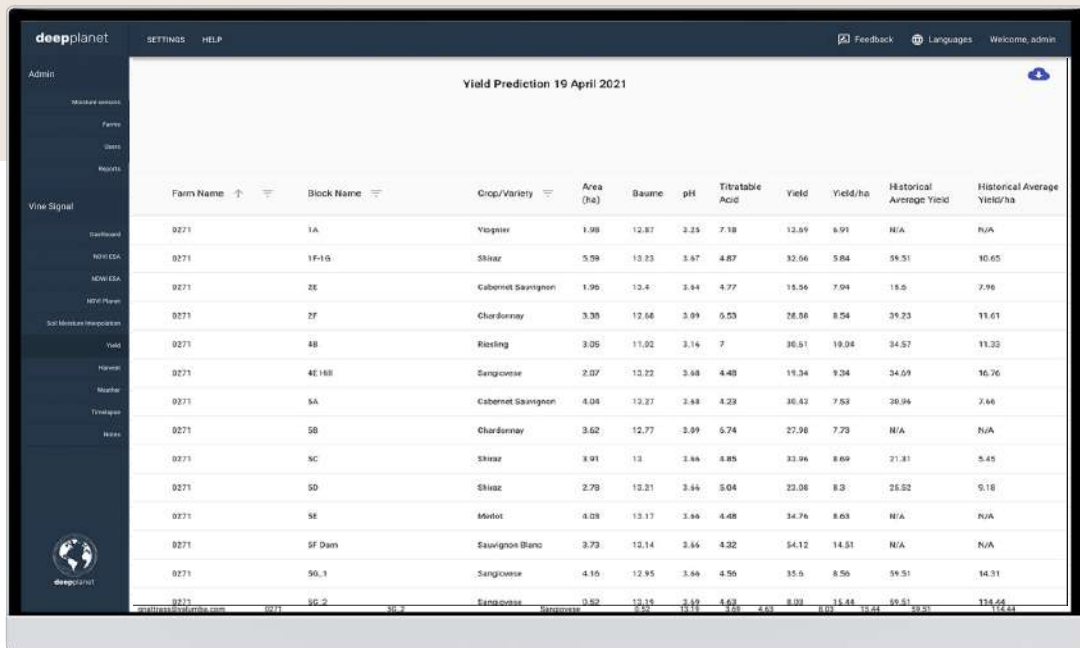
- Understand visually yield production vineyard areas
- Combined with quality maps can build profitability visuals.





# VineSignal Product

## Yield Planning



| Farm Name | Block Name | Crop/Variety       | Area (ha) | Baume | pH   | Titratable Acid | Yield | Yield/ha | Historical Average Yield | Historical Average Yield/ha |
|-----------|------------|--------------------|-----------|-------|------|-----------------|-------|----------|--------------------------|-----------------------------|
| 0271      | 1A         | Yegnier            | 1.98      | 12.87 | 2.25 | 7.18            | 12.59 | 6.91     | N/A                      | N/A                         |
| 0271      | 1F-1G      | Shiraz             | 5.59      | 13.23 | 3.57 | 4.87            | 32.66 | 5.84     | 16.51                    | 10.65                       |
| 0271      | 2E         | Cabernet Sauvignon | 1.99      | 12.4  | 3.34 | 4.77            | 15.56 | 7.94     | 15.5                     | 7.96                        |
| 0271      | 2F         | Chardonnay         | 3.35      | 12.66 | 3.91 | 6.53            | 28.88 | 8.54     | 19.23                    | 11.61                       |
| 0271      | 4B         | Riesling           | 3.05      | 11.92 | 3.16 | 7               | 36.51 | 19.04    | 34.57                    | 11.32                       |
| 0271      | 4E 188     | Sangroese          | 2.07      | 12.22 | 2.68 | 4.48            | 19.34 | 9.34     | 34.59                    | 16.76                       |
| 0271      | 5A         | Cabernet Sauvignon | 4.04      | 12.27 | 2.48 | 4.29            | 36.42 | 7.82     | 36.94                    | 7.66                        |
| 0271      | 5B         | Chardonnay         | 3.62      | 12.77 | 3.99 | 6.74            | 27.98 | 7.73     | N/A                      | N/A                         |
| 0271      | 5C         | Shiraz             | 3.91      | 13    | 3.86 | 4.85            | 31.96 | 8.69     | 21.31                    | 5.45                        |
| 0271      | 5D         | Shiraz             | 2.78      | 12.21 | 3.34 | 5.04            | 22.06 | 8.3      | 25.52                    | 9.18                        |
| 0271      | 5E         | Merlot             | 4.03      | 13.17 | 3.46 | 4.48            | 34.76 | 8.63     | N/A                      | N/A                         |
| 0271      | SF Dam     | Sauvignon Blanc    | 3.73      | 12.14 | 2.56 | 4.32            | 54.12 | 14.51    | N/A                      | N/A                         |
| 0271      | 5G_1       | Sangroese          | 4.15      | 12.95 | 3.59 | 4.56            | 35.5  | 8.56     | 19.51                    | 14.31                       |
| 0271      | 5G_2       | Sangroese          | 3.92      | 12.15 | 2.12 | 4.82            | 8.02  | 11.48    | 59.31                    | 118.62                      |

- H/M/L Estimates of yield by block using Satellite Imagery, Weather, Historical Data.
- Hands of yield prediction, provide weekly adjustments.
- Data dependent.



# Imagery

---

- Regular heartbeat
- Daily, weekly and monthly change monitoring.
- Health and Growing



# VineSignal Product

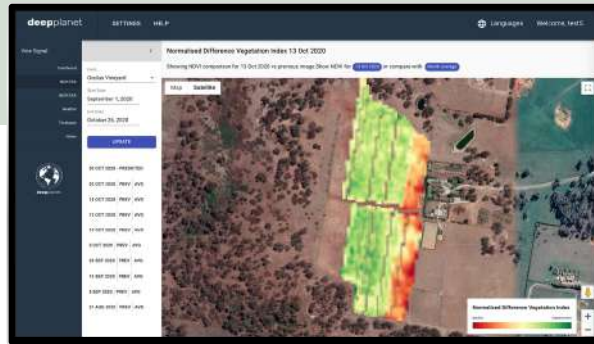
# 8.

## Health and Growing



# VineSignal Product

Growing



Normalised Difference Vegetation Index (NDVI)

## Benefits:

Focus your time

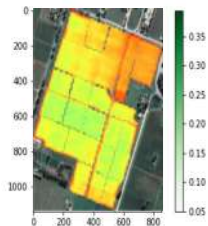
See and predict changes to remedy before they occur

\$100/ha per tractor run

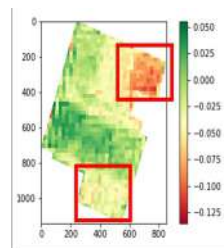
\$330/ha Variable rate vs uniform

\$50-100/t LVY v HVY grapes

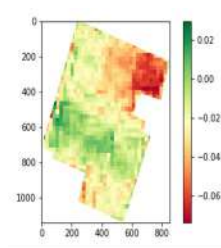
NDVI of Signature Vineyard from sentinel imagery, 28/11/19



Difference in NDVI on 28/11/19 from previous image. Highlighted areas have shown a decline in vegetation health.



Difference in NDVI on 28/11/19 against the average for the previous month.

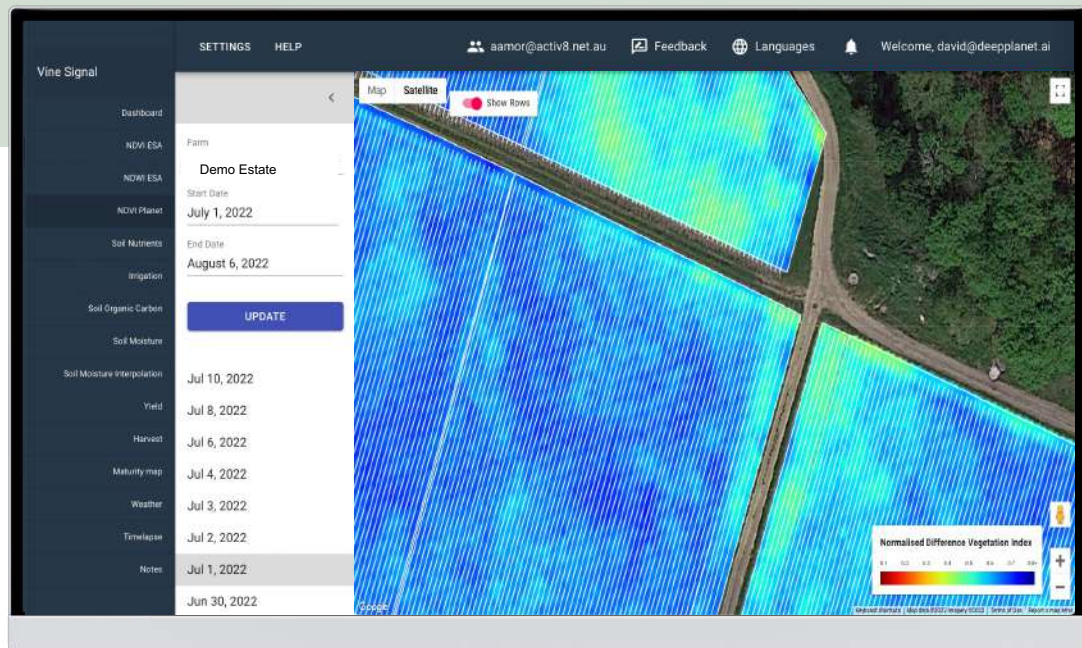


- Monitor changes frequently across multiple vineyards
- Daily, Weekly and Monthly
- Season Summary



# VineSignal Product - Demo

Daily and High Resolution Imagery



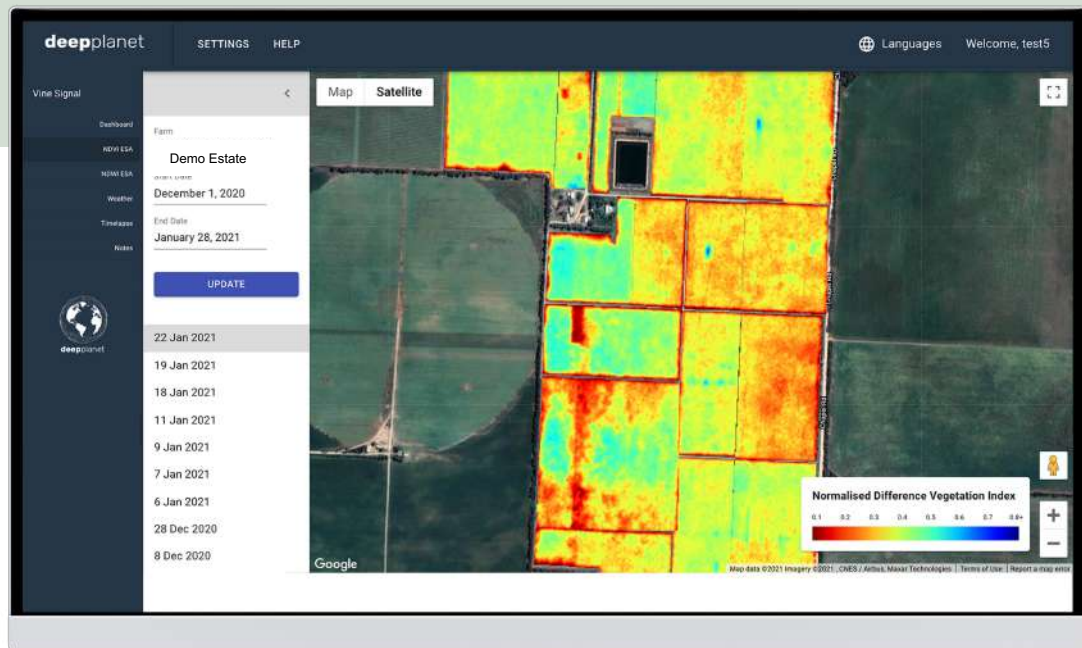
## Daily and High Resolution Imagery

- Daily imagery
- Every 3 vines per pixel
- High Resolution
- 2x a month during the season
- Identify each individual vine



# VineSignal Product - Demo

Growing



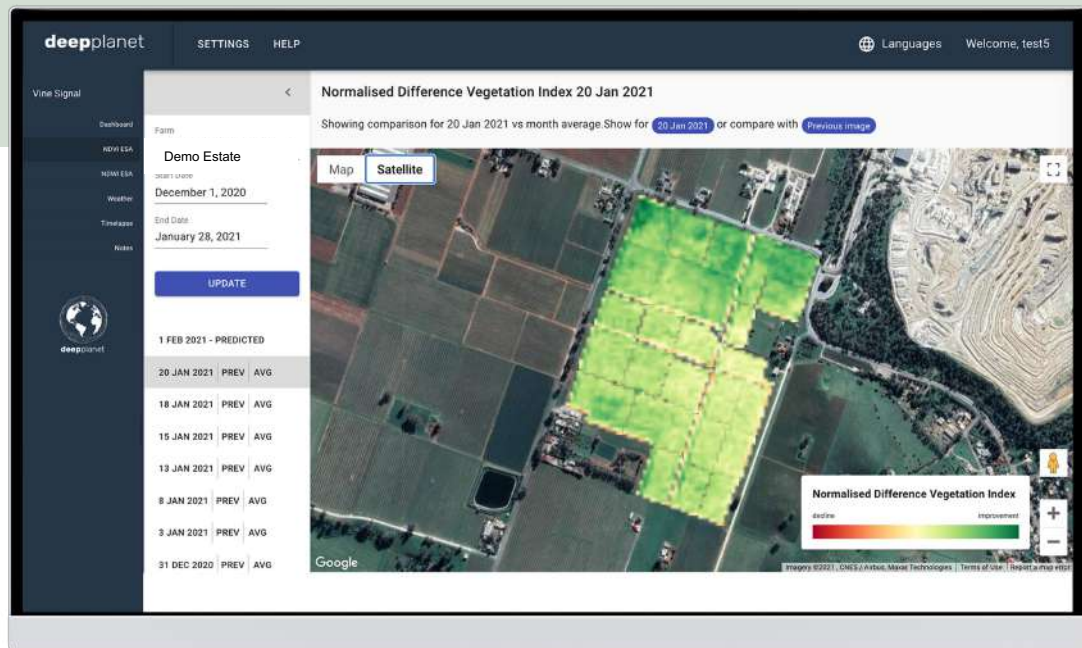
Irrigation leaks

- Daily imagery
- Every 3 vines per pixel



# VineSignal Product - Demo

Growing



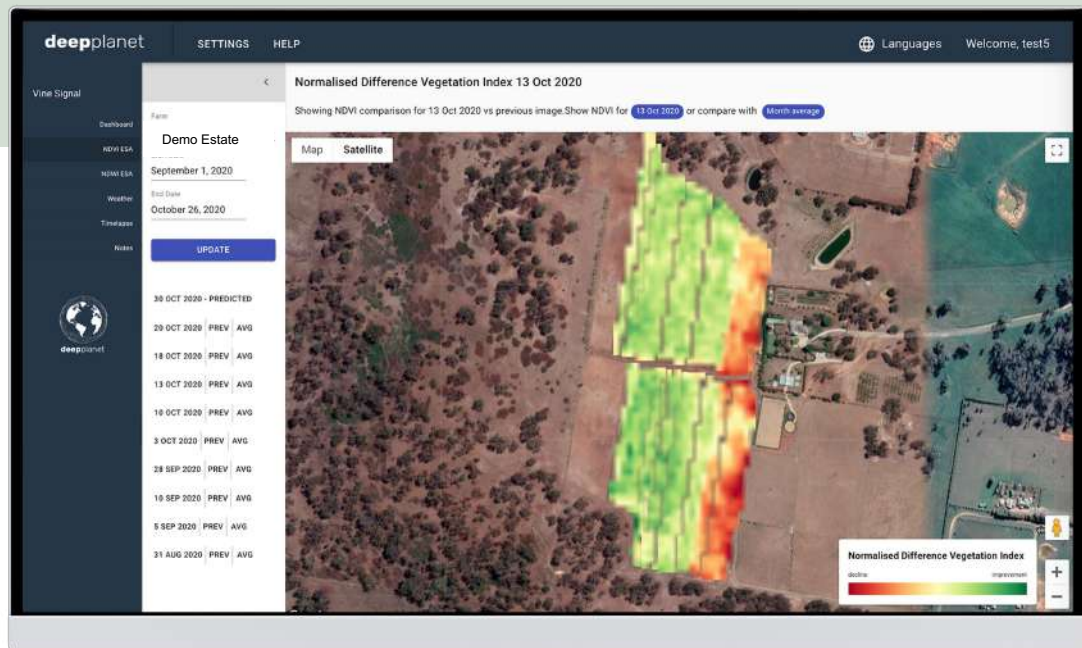
Daily, Weekly and Monthly Change

Example of Vineyard well managed and consistent variability



# VineSignal Product

Growing



Daily and Weekly Change



Identification of affected area from a frost event

Vineyard showed decline after the frost event





# VineSignal Product

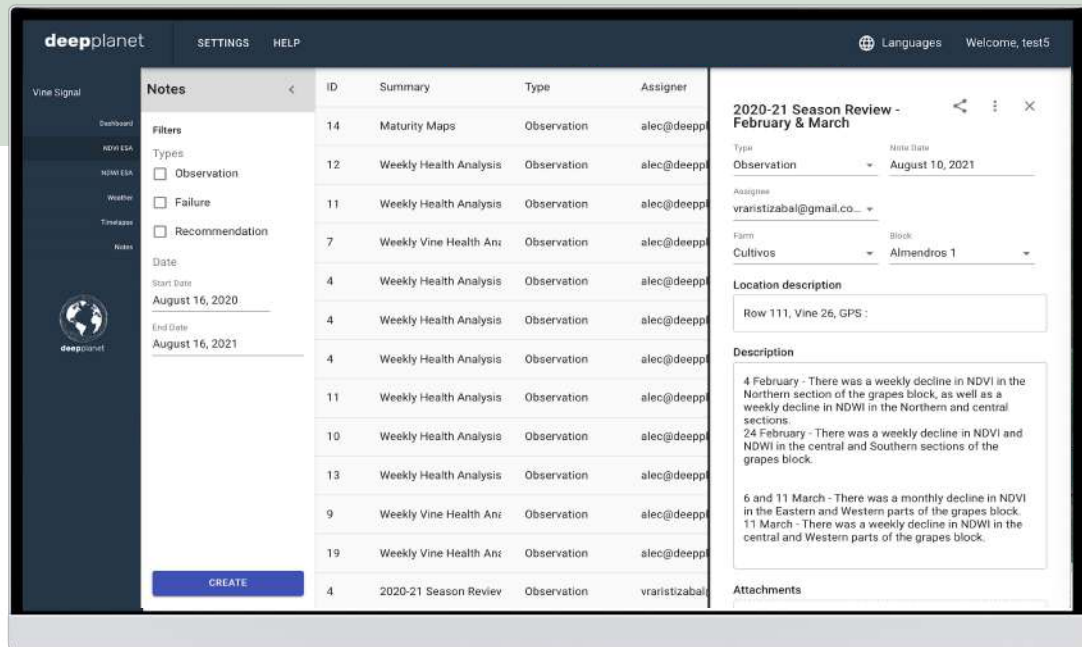
9.

Notes and  
Work Mgt



# VineSignal Product

## Vineyard Notes and Work Management



- Build vineyard history.
- Record notes & work mgt.
- Share with others within org and external.
- Delegate work.
- Record inspection data.
- Record pest, disease and failure data.
- Get feedback from field.
- Integrate with spray diaries and statutory systems.



# VineSignal - \$USD

Getting Started

Sign up today

<https://www.deepplanet.ai/vinesignal-signup>

- 15 minutes to sign up
- Send us your blocks
- We'll do mapping
- Free tool
- 14 day trial
- **Enterprise pricing available**

A la Carte

- Disease
- Soil Organic Carbon
- Soil Nutrients



## Imagery

Daily Vine health and Leaf Health, Weather, Notes

Setup in 15 minutes

**\$10 acre per year**



## Winemaker & Logistics

Imagery + 2 week prediction of leaf and soil health

Setup in 1 day

**\$25 a vineyard block or plot**



## Grower and Sustainability

Imagery + Soil Organic Carbon, Soil Nutrients, Disease, Leaf Nutrients, Leaks, Evapotranspiration

Setup in 3 days

**\$25 acre per year**



deepplanet

AI for Sustainable Precision  
Viticulture  
VineSignal

[www.deepplanet.ai](http://www.deepplanet.ai)

[david@deepplanet.ai](mailto:david@deepplanet.ai)

713-724-2207



@deepplanet3



deep-planet

