



Suisun Valley Grape Growers Association

2008 Press Kit ~ Table of Contents

Fact Sheet.....	2
Principal Contact List.....	3
Member Contact List.....	4
Associate Member List.....	5
Suisun Valley ~ Planted Varieties.....	6
Suisun Valley History.....	7
SVGGA ~ Overview.....	8
Suisun Valley ~ 25 th Anniversary of Appellation Designation (12/14/07)...	9
Signs of Growth are Spreading through the Valley (09/11/07)	10-12
Why Buy Suisun Valley Grapes.....	13
Suisun Valley Map.....	14
Suisun Valley Map with vineyard images.....	15



FACT SHEET

ASSOCIATION INFORMATION

4160 Suisun Valley Road, Suite E – 141
Suisun Valley, CA 95434
E-mail: info@svgga.com

CALIFORNIA'S 11TH AVA

ESTABLISHED: DECEMBER 27, 1982
Web: www.svgga.com
Tel: (707) 620-0788 for info on SVGGA

OFFICERS | DIRECTORS (2004)

President – Roger King
Vice President – Ken Lanza
Secretary – Maurry Koch

Treasurer – Gary Mangles
Director – Steven Tenbrink
Director – Dan Capp
Director – Chris Estes
Director – Rick Wehman

HISTORY

Established on December 27, 1982, Suisun Valley is California's 11th AVA

GEOGRAPHY

Suisun Valley is 15,360 acres, with 3,000 acres currently planted to wine grapes. Suisun Valley lies within the southern end of two ranges of the Coast Range: the Vaca Mountains to the east and the Mt. George Range to the west. Suisun Valley terminates in the south at the marshlands of Suisun Bay. To the north, Suisun Valley rolls up into Wooden Valley at the Napa County line.

Length	Approximately eight miles
Width	Approximately three miles at its widest point
Orientation	North to south, split mid-valley to two geographical fingers
Drainage	Suisun Creek and Ledge wood Creek drain into Suisun Bay

CLIMATE

Suisun Valley's terroir is characterized by cool, moist winds blowing inland, from the Pacific Ocean and San Francisco's San Pablo Bay, continuously from May through early fall. Spring frosts are made less severe by its proximity to the Suisun Bay.

CLIMATE TYPE

Climate is Mid-region III, as classified by the University of California Davis system of heat summarization by 0° degree days.

ACCUMULATION

Averages roughly	3,350 degree days per year
Mid valley average	3,250 to 3,450 degree days per year
Upper valley average	3,700 to 3,750 degree days per year

SOILS

Suisun Valley consists of a mixture of soils zoned within the valley floor, and additional none-typed soils within the undeveloped hillsides. Soil types include the following:

Brentwood clay loam	Sycamore silty loam
San Ysidro sandy loam	Rincon clay loam

WATER

Suisun Valley is primarily provided with agricultural water via Putah South Canal, which draws from Lake Berryessa, and is operated by the Solano Irrigation District.



Principal Contact List

Suisun Valley Wine Grape Growers Association Board of Directors

Roger King - President

2546 Mankas Corner Road
Suisun Valley, CA 94534
(707) 425-9076
(707) 425-8314 fax
lwvineyard@aol.com

Ron Lanza - Vice President

4756 Suisun Valley Road
Suisun Valley, CA 94534
(707) 864-0730
707 580 5654 cell
ron@woodenvalley.com
info@woodenvalley.com

Maurry Koch - Secretary

5055 Business Center Drive Suite 108
PMB 396
Fairfield, CA 94534
(707) 863-9779
maurry@suisun-valley.com

Gary Mangels - Treasurer

2294 Morrison Lane
Suisun Valley, CA 94534
(707) 864-1591
mkmangels@sv.com

Jim Parr - Director

4285 Suisun Valley Road
Suisun Valley, CA 94534
(707) 864-2154
(707) 427-0455
gordonvalleyfarms@aol.com

Rick Wehman - Director

4589 Abernathy Road
Suisun Valley, CA 94534
(707) 426-4424
(707) 426-4545 fax
ledgewoodcreek@msn.com

Stephen Tenbrink - Director

5260 Gordon Valley Road
Suisun Valley, CA 94534
(707) 438-7887
s10edge@aol

Chris Estes - Director

5304 Williams Road
Suisun Valley, CA 94534
(707) 435-9191
(707) 974-3718 fax
chrise@FPSmithEQ.com

Howard Babcock - Director

2434 Morrison Lane
Suisun Valley, CA 94534
(707) 864-0440
howard@babcockgrapes.com

Diaz Communications - For Public Relations

781 Natalie Drive
Windsor, CA 94534
(707) 620-0788
(707) 838-9159
info@diaz-communications.com
diaz-communications.com



Member Contact List

Grower Members	Contact	Phone
	Bobby & Renee Balestra	707-863-0165
	Willis & Reba Johnson	707-226-2876
	Jeffrey Miller	707-864-8427
	Catherine & Richard Zimmerman	707-429-2519
	Fred Abruzzini	707-422-9575
	Jay Adair	707-425-3560
	Frank & Dorothy Andrews	707-864-1818
	Brian Babcock	707-864-1222
	Howard Babcock	707-864-0719
	Larry & Lisa Balestra	707-864-0269
	Biggs Family	707-864-0269
	Curt and Jeanette Lindemann	707-435-9367
	Ester Engel Rowland	707-422-7436
	Chris & Tracie Estes	707-435-9191
	Mary & Leonard Gianni	707-864-08229
	Don Johnson & Jim Parr	707-427-0455
		707-421-2359
	James Peterson	510-547-5549
	Jones	707-864-1072
	Maurice & Gloria Koch	707-863-9779
	Lanny & Sandra Capp	707-425-3932
	Ken Lanza Ron Lanza	707-864-0730
	Rick Wehman	707-426-4424
	Roger King	707-425-9076
	Ron & Kim Loney	707-425-8933
	Frank and Sarah Lindemann	707-864-0628
	Michael German	707-425-3150
	John Mangels & Gary Mangles	707-864-1591
	James Delehanty	650-342-3996
	Gary Mangles	707-864-1591
	Ross Niffenegger	707-864-0226
	Oberti Family	707-864-1521
	Katherine Frances Scarlett	707-425-2732
	Stephen P. Smith	925-680-6882
	Teresa & John Wignall	707-963-2590
	Steven Tenbrink	707-438-7887
	Christine and A. R. Tooby	707-422-2141
	Dan & Marguerite Capp	707-425-4179
	Robert Hansen	707-421-2359
	Pete Vernasca	707-864-8350
	Frank Vezér	707-435-8082
	Paul & Bonnie Herman	707-863-8830
	Bradley and Renee Wolfskill	707-422-4184
A & J Custom Farming		
A.J. Vineyards		
Andrews Vineyards		
Babcock Vineyard		
Babcock Vineyards, Inc.		
Balestra & Balestra		
Biggs Family Trust		
C & J Ranch		
Clayton Vineyards – Ellis Clayton Vineyards		
Estes Vineyards		
Gianno Vineyard		
Gordon Valley Farms		
Hansen Farms		
J & E Investments		
Jones Ranch		
Koch Vineyards		
Lanny Capp Vineyard		
Lanza Vineyards Inc.		
Ledgewood Creek Winery		
Ledgewood Vineyards		
Loney Ranch		
M & L Ranch, Lindemann Enterprises		
M. German & Son Fruit Co.		
Mangels Ranch		
Monroe Ranch		
Morrison Ranch		
Niffenegger Vineyard		
Oberti Vineyards		
Scarlett's Family Vineyard		
Smith Family Partners		
Solano Foothill Vineyard, LLC		
Tenbrink Ranch		
Tooby Vineyard		
Twin Creek Vineyards Brocap Vineyards		
Upper Valley Vineyards - Hansen Farms		
Vernasca Vineyards		
Vezér Family Vineyards		
Wine & Walker Ranch		
Wolfskill Ranches		



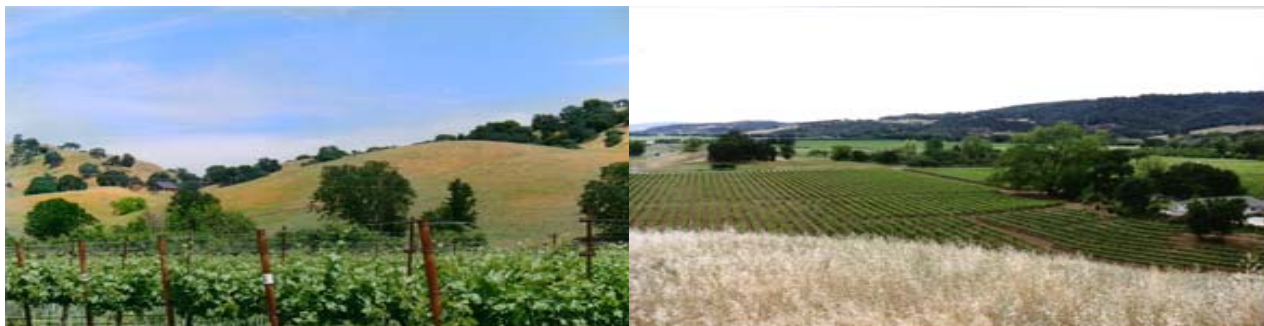
Associate Member Contact List

Member	Contact	Phone
	Jack Batson	
	Andrea M. Bosco	
	Keith Grimson	707-864-6463
	Alf Burtleson	707-963-2916
Alf Burtleson Construction		707-433-6525
Allied Grape Growers		707-745-1116
All-Points Petroleum	Ron Myska	
Bask Cellars	Brian Babcock	707-864-1818
California Association of Wine Growers	Karen Rose	916-924-5370
Country Estates Inc	Gloria M. Koch	707-863-9779
D & B Ranch	Dennis & Sandi, of D & B	
Diaz Communications	Jose & Jo Diaz	707-620-0788
Family Winemakers of California	Paul Kronenberg	916-498-7500
FP Smith Parts & Equipment	Pete Smith	707-864-1122
Gaw Van Male, Counselors at Law	Dean Kackley	707-252-9000
Green Valley Tractor	Ron & Kim Loney	707-425-8933
Greystone Vineyards	Dwight & Elaine Woodard	707-425-6210
Jim Lewis Viticultural Services	Jim Lewis	707-257-3061
P.S. I Love You	Jo Diaz	707-620-0788
Mercer Grapevines	Guillaume	707-689-6789
Magorian Mine Services	Wine Caves Division	707-553-2332
State Farm Insurance	Gary Falati	707-422-4311
SVFGA		
The Henry Wine Group	Don Locke	707-745-8500
Turrentine Wine Brokerage	Bill Turrentine	415-209-9463
Vineyard Specialists	Gail Gant	916-961-6166
Wirth Ranch	Lillian Wirth	707-864-0545
Wooden Valley Winery	Ron Lanza	707-864-0730

Blue Color = Established Winery in Suisun Valley



Suisun Valley ~ Planted Varietal List



BARBERA	MERLOT	PINOT NOIR	SEMILLON
CABERNET FRANC	MOUVEDRE	PRIMITIVO	SHIRAZ
CABERNET SAUVIGNON	MUSCAT CANELLI	RIESLING	SYRAH
CHARDONNAY	PETITE SIRAH	ROUSANNE	VIOGNIER
GAMAY	PETITE VERDOT	SANGIOVESE	WHITE REISLING
GRENACHE	PINOT GRIS	SAUVIGNON BLANC	ZINFANDEL





Suisun Valley ~ History

Varietal grape growing for premium winemaking in California's Suisun Valley has roots dating back into the 1800's, and represents over a century of continuous viticultural activity.



In the 1800's, vineyards were more prominently located in the southern end of both Suisun Valley and neighboring Green Valley. They were typified by classic head pruned vines in field-blend plantings. In the latter 1800's, Mangles Winery (long decommissioned and now gone) sat just to the west of Suisun Valley Road near Cordelia. It represented one of the largest commercial wineries in the United States in its day, and produced wines from fruit grown in and around this location.

While phylloxera (and later Prohibition) did much to disrupt the local grape industry in the early 1900's, a strong rebound for grapes and wine commenced in the post WWII economic expansion. Wine industry cycles over the years have continued to increase viticultural acreage, change varietal plantings, and influence a continuous pursuit of quality gains.

In 1982, growers of the Western Solano County Grape Growers Association successfully petitioned the BATF, and received formal designation of Suisun Valley as an identified AVA. The 15,000 acre Suisun Valley AVA was subsequently included in the 1983 formation of the North Coast AVA, combining Napa, Sonoma, and Mendocino counties, together with Suisun Valley and Green Valley (with elements of Lake and Marin Counties) into one overarching ultra premium growing region, now recognized world-wide.

Benefiting from a Mediterranean climate, properly fertile soils, and significant marine air influences during summer months, Suisun Valley growers have incorporated new trellising systems with changes in varietal and clone selections to continue quality enhancement in wine grape production.

Today, approximately 3,000 acres are under vine in the Suisun Valley and that fruit continues to be sourced by numerous Napa and Sonoma wineries for inclusion in multiple product lines.



SVGGA ~ Overview

The formation of Suisun Valley Grape Growers Association (SVGGA) is considered to create a more cohesive and sustainable competitive market position for wine grape growers within the Suisun Valley AVA; thereby, improving and bettering the conditions of respective grower members of the Association. This will be accomplished through a number of proposed specific goals and objectives as outlined below:

Goals and Objectives

To sustain wine grape production at commercially profitable levels for all growers with the Suisun Valley AVA:

1. To improve price per ton averages on annualized basis to maintain grower revenue in line with increased operating costs
2. To increase annual tonnage shipments from Suisun Valley to premium North Coast wineries
3. To develop meaningful awareness within commercial markets of the North Coast (AVA) orientation of Suisun Valley and position such awareness as high quality/high value
4. To foster access to premium grapes to serious home wine markets, for those growers seeking such buyers
5. To foster further winery development within the Suisun Valley AVA producing Suisun Valley appellation wines

Association Objectives

1. Return Grape contract pricing to equal or exceed recommended pricing set by North Coast wine grape producers
2. Establish, within 2 years, viable sales promotion channels exclusive to SVGGA members that are recognized by both commercial and home winegrape buyers
3. Pursue contracting terms with major premium commercial buyers that establish Suisun Valley AVA in appellation wines and single vineyard wines
4. Work to narrow pricing gaps to Napa Valley average grape pricing per ton
5. Support development of additional Suisun Valley wineries within next two years

Strategies to Accomplish Goals and Objectives

1. Strong promotion of positive aspects for the Suisun Valley terroir, defining key nuances of marine influence, soils types, clonal selections and viticultural practices
2. Create and implement a viable sales channel to both commercial and home winegrape buyers through use of internet technology and conventional communications.
3. Establish programs and services to assist growers to constantly improve quality levels of wine grape varieties produced.
4. Collective negotiation of major grape contracts if and when appropriate.
5. Implementation of a price/value index on SVGGA grapes
6. Strong solicitation and incentives to wineries to produce single vineyard or AVA appellation wines.



IMMEDIATE RELEASE

December 14, 2007

Media Contact: Jo Diaz

(707) 620-0788

jo@diaz-communications.com

25th Anniversary

Of Appellation Designation

SUISUN VALLEY: The Silver Anniversary kick-off for California's twelfth historical AVA is a winemaker dinner with Suisun Valley Grape Growers and Winemakers, Thursday, December 27, 2007, at 6:30 p.m., Vintage Caffè, Mankas Corner, Suisun Valley.

Immediately Following the winemaker dinner, Suisun Valley Grape Growers have planned a celebratory weekend, with four Suisun Valley tasting room hosting their festivities:

- Saturday, December 29, and Sunday, December 30, 2007, from 12:00 p.m. to 5:00 p.m.

The **four host locations** are the following:

- *Ledgewood Creek Winery*, 4589 Abernathy Road
- *Suisun Valley Wine Cooperative*, 4495 Suisun Valley Road
- *Vezér Family Vineyard Tasting Room*, 5066 Clayton Road
- *Wooden Valley Winery*, 4756 Suisun Valley Road

This is going to be a premium wine tasting and specialty food paring weekend, in order to showcase the exceptional wines being crafted from Suisun Valley wine grapes.

- Complimentary logo wine glasses will be offered at each location
- A wide variety of foods and savory samples will be available, with each location determining what will be offered
- Barrel tasting by select vintners
- Vertical wine tastings, also by select vintners

During this festive holiday week, the Suisun Valley Grape Growers Association, in collaboration with their tasting room neighbors, are looking forward to a delightful weekend. Independent Suisun Valley tasting rooms will be showcasing the best that their valley has to offer, welcoming the public to come share and enjoy in their celebrations.

#



IMMEDIATE RELEASE
September 11, 2007

Media Contact: Jo Diaz
(707) 620-0788
jo@diaz-communications.com

Signs of Growth are Spreading through the Valley *Literally and Figuratively*

Suisun Valley prepares to celebrate its 25th AVA Anniversary this December 2007

SUISUN VALLEY: Viticulture history began for Suisun Valley in the late 1800s. From that time until 1980, Suisun Valley winegrape growers kept their noses to the grindstone quietly growing wine grapes. In 1981, the United States instituted **American Viticultural Areas**, in order to distinguish grape growing regions. By February 1981, the first region to receive designation was Napa Valley, with 225,280 acres.

One would think that it would be decades before “little known” Suisun Valley would become an AVA; however, astute growers in the Western Solano County Grape Growers Association successfully petitioned the BATF, and received formal designation for Suisun Valley as an identified AVA by December 27, 1982. This made Suisun Valley the twelfth California AVA; then, all became quiet again in that winegrape growing region.

AVA (California <u>only</u> documented)*	ACRES	DATE (*Wine Institute)
1. Napa Valley	225,280	02/27/1981
2. Santa Maria Valley	80,000	09/04/1981
3. San Pasqual Valley	9,000	09/16/1981
4. Guenoc Valley	4,396	12/21/1981
5. Santa Cruz Mountains	0.00	01/04/1982
6. Sonoma Valley	4,000	01/24/1982
7. Lime Kiln Valley	2,300	07/06/1982
8. Chalone	8,540	07/14/1982
9. Paicines	4,500	09/15/1982
10. Cienega Valley	0.00	09/20/1982
11. Livermore Valley	96,000	10/01/1982
12. Suisun Valley	15,360	12/27/1982

In July 2002, a savvy group of winegrape farmers in Suisun Valley reunited for a common purpose. Without a cohesive marketing plan, the growers realized that they'd continue to be dismissed each harvest as they tried to sell their grapes for fair market value. With their base of operation on the other side of the Vaca Mountain Range (a.k.a. Silverado Mountains), Suisun Valley was constantly being eclipsed by neighboring Napa. The Suisun Valley Grape Growers Association was formed, which has accelerated their purpose, growth, and direction in the last



five years in ways no one could have imagined when they began, but can now be visibly acknowledged.

Prior to SVGGA's inception, the **Lanza** family of **Wooden Valley** played a major, albeit quiet, role. In 1955, **Mario Lanza** bought property in Suisun from a friend. For others, like **Dean Frisbie** of **Ledgewood Creek Winery & Vineyards** (who's been in Suisun Valley since 1985, when he first bought a pear farm and converted it to vineyards) coming into the valley was a reinventing of oneself. And for yet others, like **Roger King** of **King Andrews Vineyard**, some have quietly arrived to escape the hectic corporate world. It's been a non-descript endeavor, focused more on growing the fruit than on anything else.

Signs of Growth



(Left) New cohesive sign program in progress ~ (Right) Suisun Valley Wine Cooperative

As Suisun Valley growers and producers begin to focus on what the association will be doing in the upcoming year to celebrate, they can't help but reflect back on what's happened within the last five, once they decided to drive their message forward.

- Cohesive sign program is in place to distinguish their locations
- Co-op tasting room created (4495 Suisun Valley Road) to showcase wines
- More brands are proudly putting Suisun Valley on their labels as an AVA
- Awareness and demand for Suisun Valley fruit is on the rise
- Great scores for wines appellated to Suisun Valley has produced rapid awareness

The Co-op tasting room is broadly managed by **Doug Sparks** of the **Sunset Cellars** label, with each of the featured brands also assuming tasting room duties. As an early adopter for appellation his wines to Suisun Valley, Doug Sparks of Sunset Cellars was in the right place at the right time. The need for a tasting room within the valley, and Doug's needs to have a tasting room, collided.

Current Brands in Suisun Valley Wine Coop Tasting Room:

- | | |
|---------------------------------|-------------------------|
| ○ King Andrews Vineyards | ○ Twilight Ridge |
| ○ Shale Peak Vineyards | ○ Winterhawk |
| ○ Sunset Cellars, LLC | |



Additional Brands Appellated to Suisun Valley

- | | |
|--|--|
| ○ Bask Cellars (Suisun) | ○ Forlorn Hope (Napa) |
| ○ Koch Wine (Suisun) | ○ Manifesto! (Napa) |
| ○ Ledgewood Creek (Suisun) | ○ Olabisi Wines (Calistoga) |
| ○ Mankas Hills Vineyards (Suisun) | ○ Tenbrink |
| ○ Vezér Family Vineyard (Suisun) | ○ Thomas Michael Cellars (Yountville) |
| ○ Wooden Valley (Suisun) | ○ Trahan Winery (Rutherford) |
| ○ Croze (Yountville) | |

Tasting Rooms in Suisun Valley

- | | |
|---|--------------------------------|
| ○ Ledgewood Creek Winery | ○ Vezér Family Vineyard |
| ○ Suisun Valley Wine Cooperative | ○ Wooden Valley Winery |



Vezér Family Vineyard buildings, Mankas Corner (New addition)



(Left) Ledgewood Creek Winery ~ (Right) Wooden Valley Winery

#

Board of Directors ~ 2005

President: Roger King
Vice President: Ken Lanza
Secretary: Maurry Koch
Treasurer: Chris Meade
Director: Dan Capp
Director: Dean Frisbie
Director: Howard Babcock
Director: Frank Lindemann
Director: Gary Mangles

Grower Members

A & J Custom Farming
Ames & Albright
Babcock Vineyards, Inc.
Balestra & Balestra
Bella Vista Ranch
Biggs Family Trust
Bourland Vineyards
Brian Babcock
C & J Ranch
Carty Brothers
Catherine & Richard Zimmerman
Chris & Tracy Estes
Delehanty Properties
Ellis-Engel Ranch
Frank and Dorothy Andrews
Gary & Rosa Phillips
Gordon Valley Farm
Greystone Creek
Greystone Vineyards
Hansen Farms/Upper Valley
Vineyards
Jay Adair
Katherine Francis Scarlett
Lanny & Sandra Capp
Lanza Vineyards Inc.
Larry & Lisa Balestra
Ledgewood Creek Winery
Ledgewood Vineyards
Loney Ranch
M & L Ranch
M. German & Son Fruit Co.
Mangels Ranch
Mankas Hills Vineyards
Mary & Leonard Gianno
Meades Ranch
Paul and Bonnie Herman
Ross Niffenegger
Smith Family Partners
Solano Foothill Vineyard, LLC
Tenbrink Ranch
Tooby Vineyard
Twin Creek Vineyards
& Brocap Vineyards
Vernasca Vineyards
Willis & Reba Johnson
Wolfskill Ranches

Appellated Wineries:

Ledgewood Creek Winery
Mankas Hills Vineyards
Olabisi Wines
Sunset Cellars
Thomas Michael Cellars
Wooden Valley Winery

Associate Members

Alf Burtleson Construction
CA Assoc. of Winegrape
Growers
Country Estates Realty
Family Winemakers of CA
Gail Gant
Green Valley Tractor
Joe Bosco
PS I Love You
Turrentine Wine Brokerage
V. Sattui
Wine America
Wirth Ranch



Why Buy Suisun Valley Grapes?

- Outstanding quality fruit serving super premium to luxury category wines = **BEST VALUE**
- Marine influence of San Pablo Bay & Suisun Bay
- California North Coast AVA
- Unique grower | buyer relationship
In Suisun Valley, some growers produce both cool climate Chardonnay in southern Suisun Valley and warm climate Cabernet in northern Suisun Valley
- Primary Fruit: Chardonnay, Cabernet Sauvignon, Merlot
- Niche Fruit in small quantity:

Barbera	Primitivo
Cabernet Franc	Riesling
Gamay	Rousanne
Grenache	Sangiovese
Mouvedre	Sauvignon Blanc
Muscat Canelli	Semillon
Petite Sirah	Syrah
Petite Verdot	Viognier
Pinot Gris	White Riesling
Pinot Noir	Zinfandel

An organization whose members are committed to growing ultra premium wine grapes.

Suisun Valley Grape Growers Association * 4160 Suisun Valley Road, Suite E – 141
Suisun Valley, CA 95434 * www.svgga.com * info@svgga.com

Suisun Valley ~ AVA



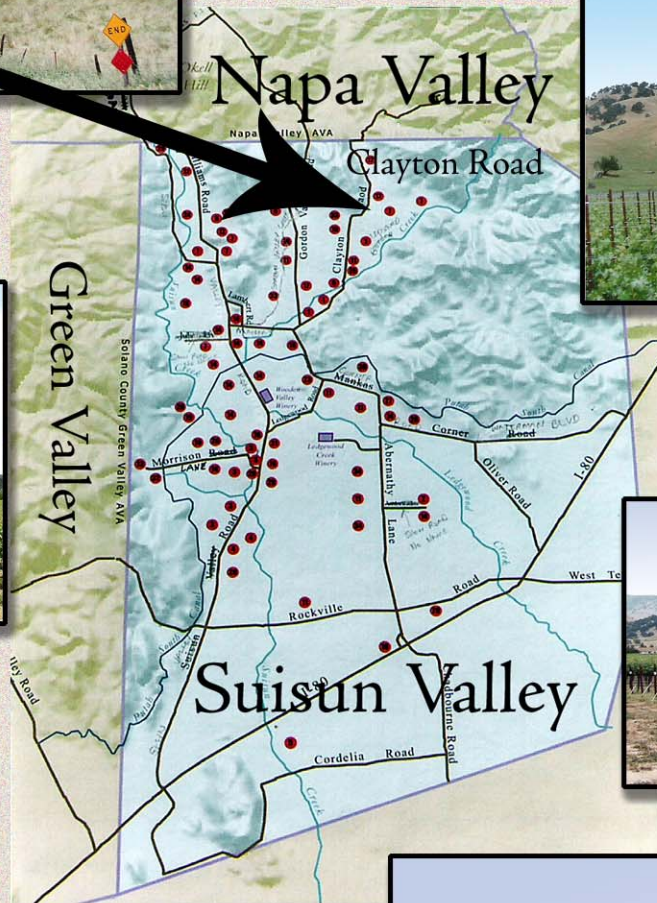
Suisun Valley AVA

North

Napa-Suisun County Line at Clayton Road



West



East



South

