



Immediate Release
August 22, 2006

Media Contact: Jo Diaz
(707) 620-0788
jo@diaz-communications.com

*Scientific data is now being gathered by four new weather stations
in the Suisun Valley Appellation...*

These new stations will help to define climatic zones in Suisun Valley,
in order to better understand and define Suisun Valley's unique terroir.

Suisun Valley, CA: Growers in Suisun Valley continue to focus on viticultural practices that embrace high quality standards of excellence and performance. In April of 2006, growers arranged for the purchase of four new weather stations. In order to scientifically classify the microclimates within Suisun Valley, Suisun Valley Grape Growers Association, in collaboration with the Solano Irrigation District and the Suisun Valley Fund, has just installed these four new stations.

While the stations add to two already existing ones, these new additions will provide a much more comprehensive collecting of climatic statistics. These facts will help to better and more critically analyze and define the existing specific details of Suisun Valley's environment as regards the following: minimum, maximum, and canopy temperatures; dew point; wind gusts and wind speed; as well as precipitation. This knowledge will have growers better understand which varietals will better perform in which regions of their AVA.

Prior to these four new stations being installed, two older ones have been serving Suisun Valley. The **Williams 2** station was installed in March 1998, and belongs to California Irrigation Management Information System. (CIMIS is a program in the Office of Water Use Efficiency as part of the California Department of Water Resources, who manages a network of over 120 automated weather stations in California.) The second station **123 Suisun JC** is located at Solano Community College. This one is in the southwestern-most quadrant of Suisun Valley, and has been in existence since 2005.

SVGGA is an organization whose members are committed to growing ultra premium wine grapes.
Suisun Valley Grape Growers Association * 4160 Suisun Valley Road, Suite E – 141
Suisun Valley, CA 94534 * www.svgga.com * info@svgga.com (1)



Suisun Valley's facts are being gathered and organized by Chico-based *Western Weather Group*. The weather stations are state-of-the-art equipment, and will help Suisun Valley growers better track weather trends in this Y-shaped, eight-mile long AVA bordering the Napa county line, also included in the North Coast American Viticultural Area.

New stations:

AB1 ~ Abernathy 1: southeast quadrant

AB3 ~ Abernathy 3: south, mid-valley

GV3 ~ Gordon Valley 3: north, mid-valley, right side of "Y"

WL2 ~ Williams 2: northwest, left side of "Y"

Older stations:

123 Suisun JC ~ Solano Community College: SW quadrant

SSV ~ Suisun Valley: west, mid-valley

The intent of these weather stations...

It's broadly understood that as data accumulates at these weather stations, there will be documented, scientific evidence to validate at least three Suisun Valley microclimatic zones: southeast, northeast, and northwest.

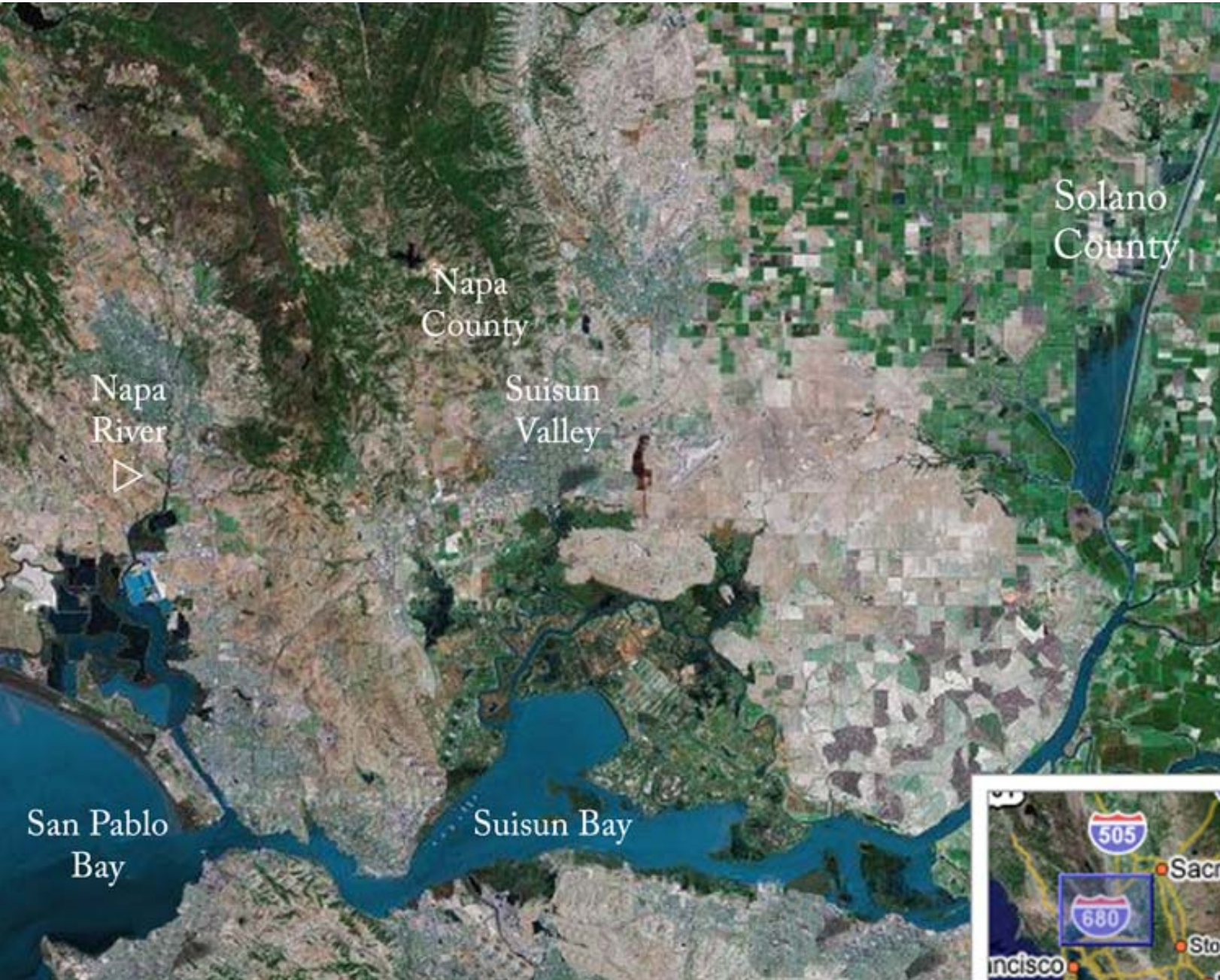
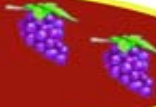
There is a common misconception that Suisun Valley is a hot Central Valley viticultural region, as it falls into a Solano County designate. **Quite the opposite is true, however, as Suisun Valley is considered a North Coast AVA, and benefits from its Mediterranean climate.** Suisun Valley enjoys significant marine-air influences during the summer months. Because of its close proximity to mountains, neighboring Napa County to its north, its climate is very similar to Napa's. Not only does Suisun Valley enjoy early morning and late evening coastal influences from **San Pablo Bay** (southwest), but it also has coastal influences driving up the valley from **Suisun Bay** (directly south). These two marine influences have varying degrees of cooling for each region in Suisun, and greatly affect grape growing in advantageous ways, as enjoyed by other North Coast appellations.

SVGGA is an organization whose members are committed to growing ultra premium wine grapes.

Suisun Valley Grape Growers Association * 4160 Suisun Valley Road, Suite E – 141

Suisun Valley, CA 94534 * www.svgga.com * info@svgga.com (2)

**SUISUN VALLEY
GRAPE GROWERS
ASSOCIATION**



SVGGA is an organization whose members are committed to growing ultra premium wine grapes.
Suisun Valley Grape Growers Association * 4160 Suisun Valley Road, Suite E – 141
Suisun Valley, CA 94534 * www.svgga.com * info@svgga.com (3)



Data from these weather stations will confirm what growers have already intuitively known and experientially learned: i.e., Suisun Valley weather changes are based on location, and can support a variety of grapes grown in the appropriate areas.

Roger King, President of the Suisun Valley Grape Growers Association comments, “We want to do everything possible to offer quality grapes from Suisun Valley. This new weather data will be invaluable as we continue to fine tune our farming practices to achieve that goal. Additionally, it will confirm what many of us have known for years; Suisun Valley climatic conditions are varied and can support cool climate Chardonnay vineyards in the south, to Rhone and Bordeaux reds in the warmer mid and northern regions.”

Weather station data can be monitored by visiting the

Suisun Valley Web site at www.svgga.com,

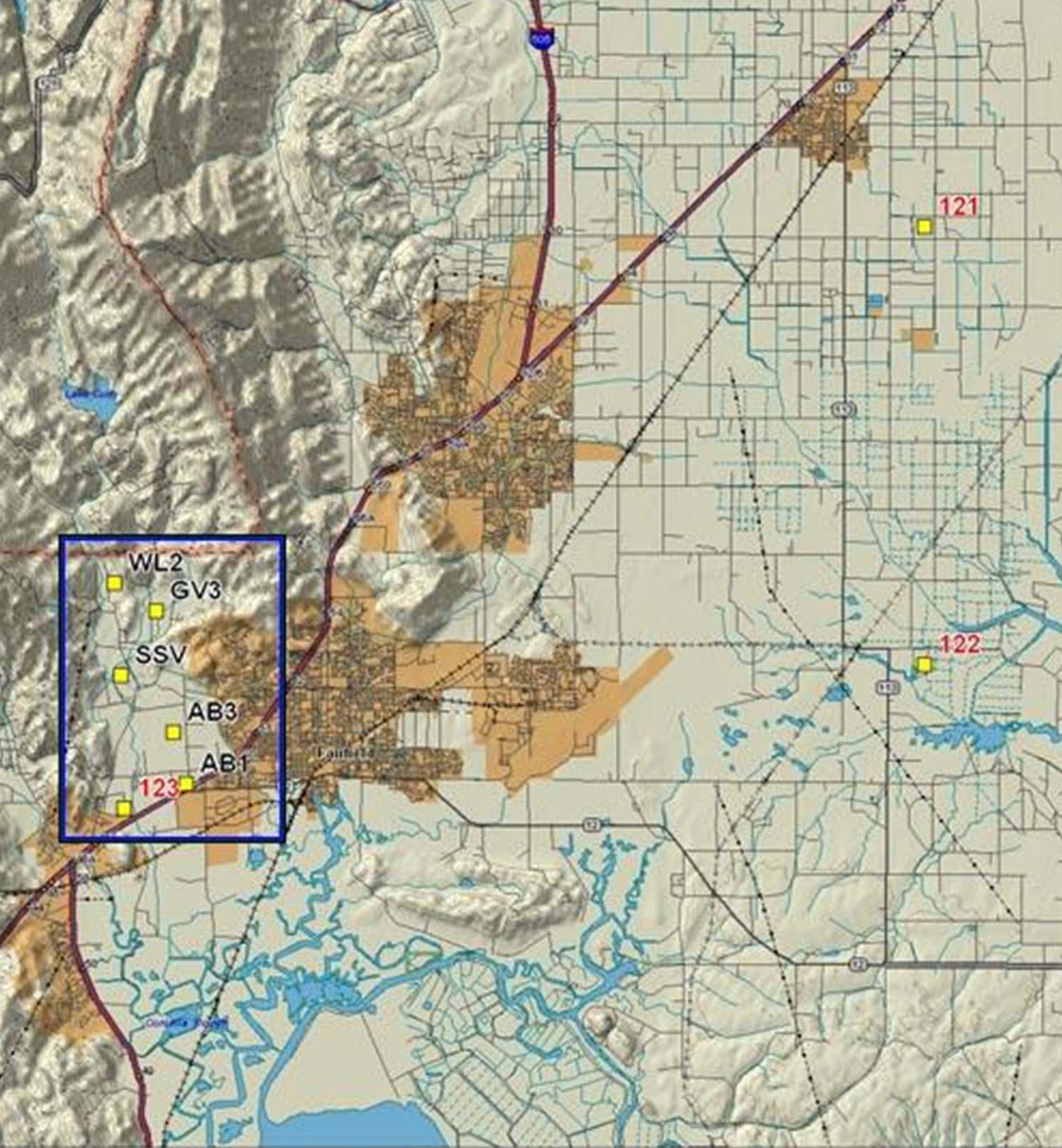
or by calling the following numbers:

| Station name | Direct Line |
|---------------------------------|--------------------|
| Abernathy 1: | 707-426-4896 |
| Abernathy 3: | 707-426-4097 |
| Williams 2/Upper Suisun Valley: | 707-426-4063 |
| Gordon Valley 3: | 707-426-4971 |

Results of the weather stations will be gathered internally, and shared periodically with media in press release updates. For further information, please contact Jo or Jose Diaz of Diaz Communications at (707) 620-0788.

#

(A map of the weather stations is attached.)



SID Stations

- AB1 [Abernathy 1](#) [past week](#)
- AB3 [Abernathy 3](#) [past week](#)
- GV3 [Gordon Valley](#) [past week](#)
- SSV [Suisun Valley](#) [past week](#)
- WL2 [Williams 2](#) [past week](#)

[click inside box to better view Suisun Valley](#)

CIMIS Stations (weekly only)

- [006 Davis](#)
- [121 Dixon](#)
- [122 Hastings Tract](#)
- [123 Suisun JC](#)
- [139 Winters](#)

